



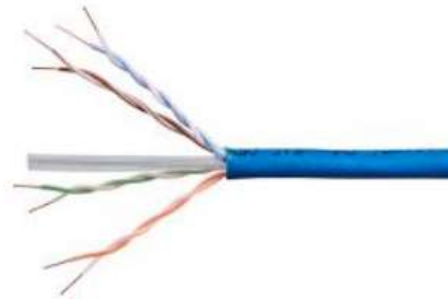
Broadstick Cat5e UTP **24AWG LAN Cable**

Broadstick provides custom Cat5e UTP 24awg cable that exceeds the ANSI/TIA 568-C.2 CAT5e.

The Broadstick 24awg cable provides high quality connection for Data Centers telecom rooms, equipment distribution areas, desk, etc.

This cable allows easy movements, installations and changes in channels up to 100 meters.

The cable is provided with a cable CM jacket and it is of 100% Bare Copper. Colors can be customized. The cable is available in CAT5e and supports POE applications.



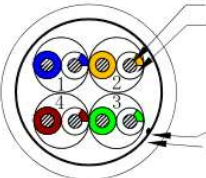
DETAILS

- Bare copper Solid
- Fluke Certification Channel: 100mts
- Insulation: HD-PE 0.92mm±0.03mm.
- NVP 69%
- 24 AWG.
- Impedance: 100 Ohms.
- Frequency 100 MHz.
- 305 Mts/roll.
- Rating Temperature 60 C.
- Voltage Rating: 30V
- Standard TIA/EIA -568B.2

Part Number	Cord Diameter	Type	Performance	Description
BS*5EUCM	5.1 mm	UTP	CAT5e 100Mhz	Cat5e 24 AWG UTP Cable CM

* Color. B – Blue, G-gray, R-red, Y-yellow, P-Purple, W-white etc.

All Broadstick products are tested in fabric.

CONSTRUCTION & DIMENSION			BROADSTICK																																
Conductor	Material:	Bare copper Solid	<div></div> <p>Insulation Color: 1. Blue&White/Blue 2. Orange&White/Orange 3. Green&White/Green 4. Brown&White/Brown</p> <p>CROSS-SECTION</p> <p>ELECTRICAL PROPERTIES</p> <table><tr><td>Solid conductor resistance</td><td>:</td><td>≤9.38 Ω/100M at 20°C</td></tr><tr><td>Insulation Resistance</td><td>:</td><td>Min. 5000mega ohms-km at 20°C</td></tr><tr><td>Dielectric Tes</td><td>:</td><td>1000V DC/1min;No Breakdown</td></tr><tr><td>Delay skew</td><td>:</td><td>≤45nS</td></tr><tr><td>Propagation speed</td><td>:</td><td>NVP 69%</td></tr><tr><td>Frequency</td><td>:</td><td>100Mhz</td></tr><tr><td>Impedance</td><td>:</td><td>100 Ω ±15</td></tr></table> <p>DESCRIPTION</p> <table><tr><td>Rating Temperature</td><td>:</td><td>60°C</td></tr><tr><td>Voltage Rating</td><td>:</td><td>30V</td></tr><tr><td>Tested</td><td>:</td><td>Fluke test passed</td></tr></table>			Solid conductor resistance	:	≤9.38 Ω/100M at 20°C	Insulation Resistance	:	Min. 5000mega ohms-km at 20°C	Dielectric Tes	:	1000V DC/1min;No Breakdown	Delay skew	:	≤45nS	Propagation speed	:	NVP 69%	Frequency	:	100Mhz	Impedance	:	100 Ω ±15	Rating Temperature	:	60°C	Voltage Rating	:	30V	Tested	:	Fluke test passed
	Solid conductor resistance	:				≤9.38 Ω/100M at 20°C																													
	Insulation Resistance	:				Min. 5000mega ohms-km at 20°C																													
Dielectric Tes	:	1000V DC/1min;No Breakdown																																	
Delay skew	:	≤45nS																																	
Propagation speed	:	NVP 69%																																	
Frequency	:	100Mhz																																	
Impedance	:	100 Ω ±15																																	
Rating Temperature	:	60°C																																	
Voltage Rating	:	30V																																	
Tested	:	Fluke test passed																																	
	Size:	24AWG*4P																																	
	Construction:	1/0.5±0.005MM																																	
Insulation	Material:	HDPE																																	
	Avg. Thickness:	0.21MM																																	
	Min. Thickness:	0.19MM																																	
	Diameter:	0.92±0.03MM																																	
Inner Layer	Direction:	S																																	
	Pitch:	25mm underneath																																	
Outside Layer	Direction:	S																																	
	Pitch:	120mm underneath																																	
Separate	Material:																																		
	Construction:																																		
Shielding	Material:																																		
	Coverage:																																		
	Drain Wire:																																		
	Material:																																		
	Coverage:																																		
Filler	Material:	Nylon																																	
Jacket	Material:	PVC																																	
	Avg. Thickness:	0.55MM																																	
	Min. Thickness:	0.50MM																																	
	Diameter:	5.1±0.30mm																																	
	Color:	Optional																																	
			Description:LAN CABLE CAT 5e UTP 1/0.5BC*4P PVC																																
			Drawing	Owen	2022.11.21																														
			UNIT:MM	REV.:A																															
			Checked																																
			Approved																																
			BROADSTICK																																