



Dual Fiber 40CH C21-C60 DWDM MUX DEMUX, With 1310nm and Monitor Port

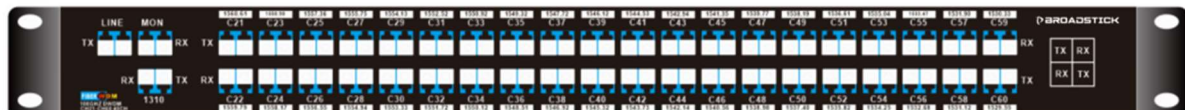
PN: BSMD40-C21-C60

Broadstick provide custom MUX and DEMUX devices. This custom MUX DEMUX device is designed by Broadstick using wavelength from C21 to C60 (1560.61nm ~ 1529.55nm), in accordance with the ITU-T G.694.1 100GHz grid, it maximizes the capacity of the C-band range.

The 40CH DWDM with 1310nm port is totally passive DWDM device, and support low insertion loss(wavelength ports<3.5dB; 1310nm port<0.8dB). And it conjunct with The DWDM amplifiers and DCM device, the 40ch DWDM transfer system can support a long distance transmission..

Details

Type	40channels C21-C60	Return Loss	≥ 40dB
Size	44*440*230mm	Center Wavelength Accuracy	±0.05nm
Weight	1.5Kg	Polarization Mode Dispersion	≤ 0.1ps
Temperature	Operating -40 to 85°C Storage -40 to 85°C	Directivity	≥ 40dB
Technology	AAWG (Gaussian)	Polarization Dependent Loss	≤ 0.3dB
Rack mount	1U 19-inch standart	Channel Isolation	Adjacent ≥ 25dB Non-adjacent ≥ 29dB
1310nm Port Pass Band Width	1260nm~1360nm	Channel Spacing	100GHz (0.8nm)
Insertion Loss @ 1310 port	≤ 0.8dB	Link Loss	≤ 7dB



- 1310nm port can support 1G LX/SX, 10G LR, 40G ER4/LR4, 100G LR/ER4/LR4/ZR4; it for Existing Legacy Traffic.
- Mon port is for network link monitoring or power monitoring, easy troubleshooting without affecting traffic.

For more information please contact sales@broadstick.com

www.broadstick.com